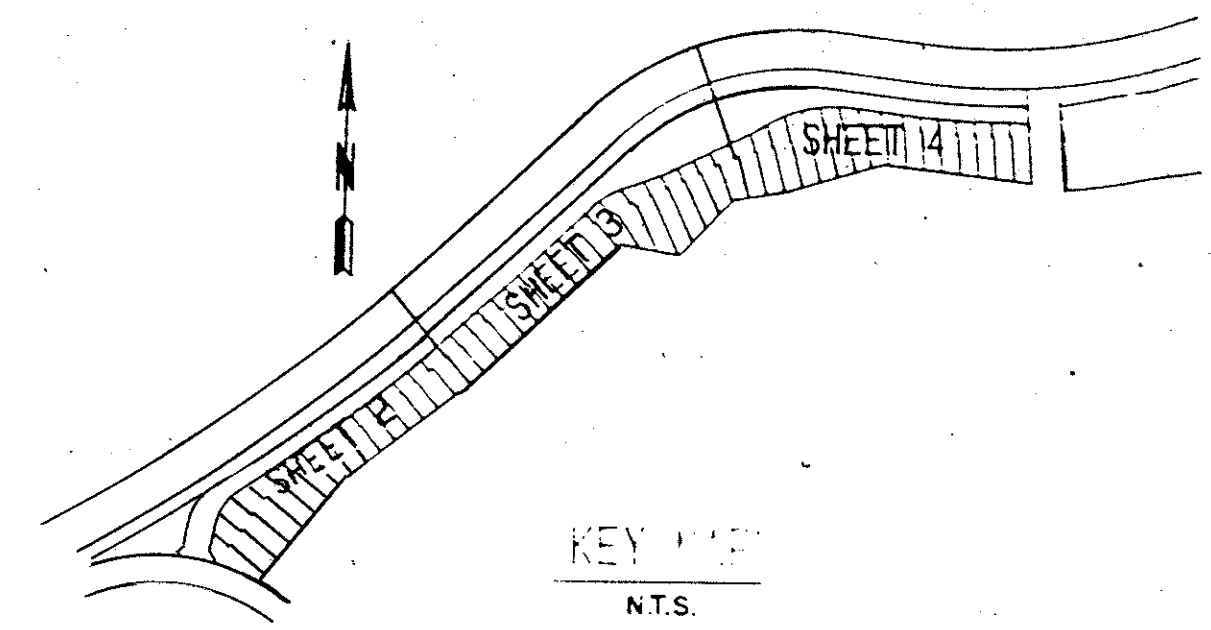


HUNTERS CHASE OF PALM BEACH POLO & COUNTRY CLUB

WELLINGTON P. O. D.
IN PART OF SEC. 15, TWP. 44S, RGE. 41E
PALM BEACH COUNTY, FLORIDA
IN FOUR SHEETS SHEET NO. 2

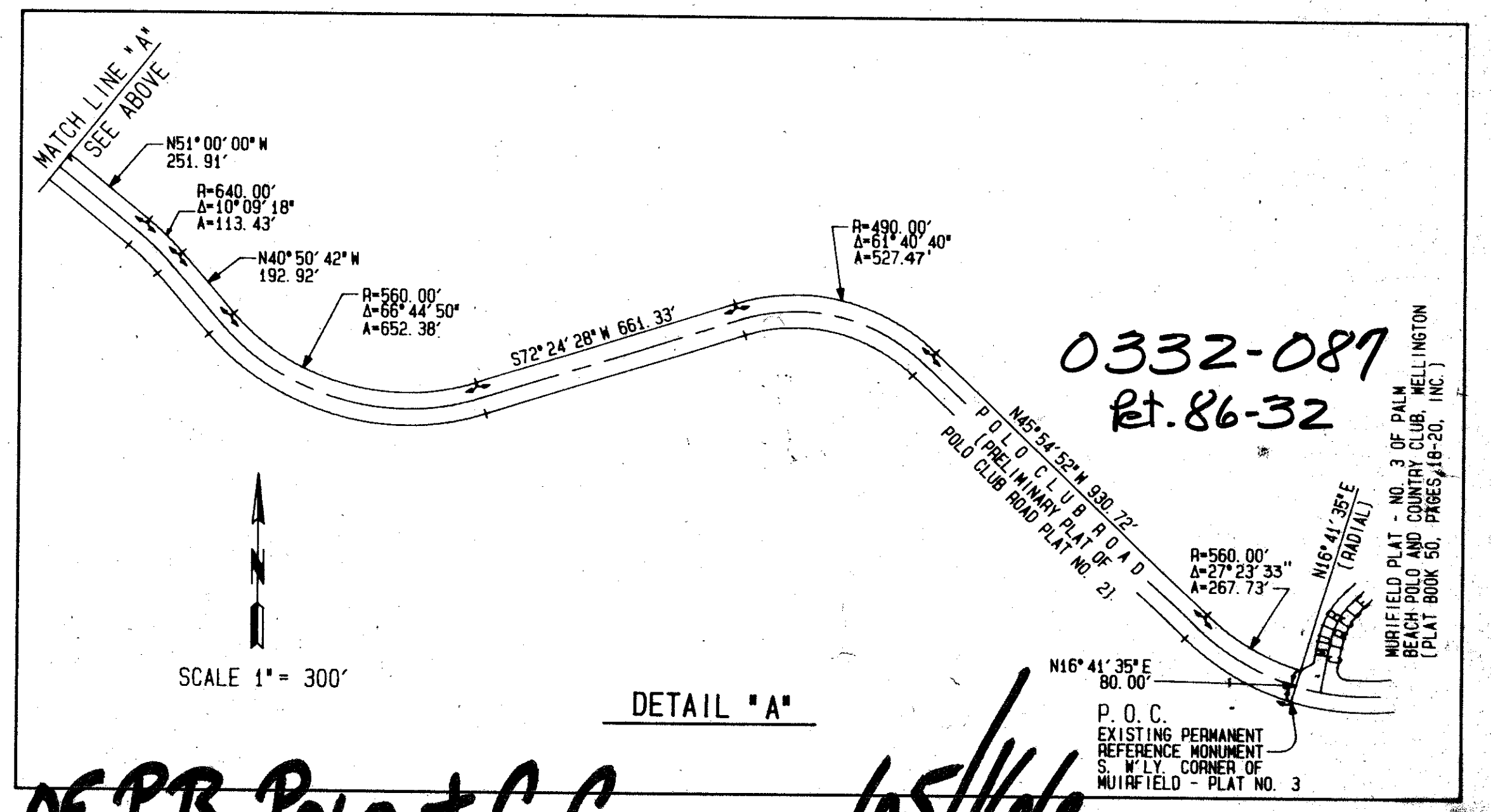
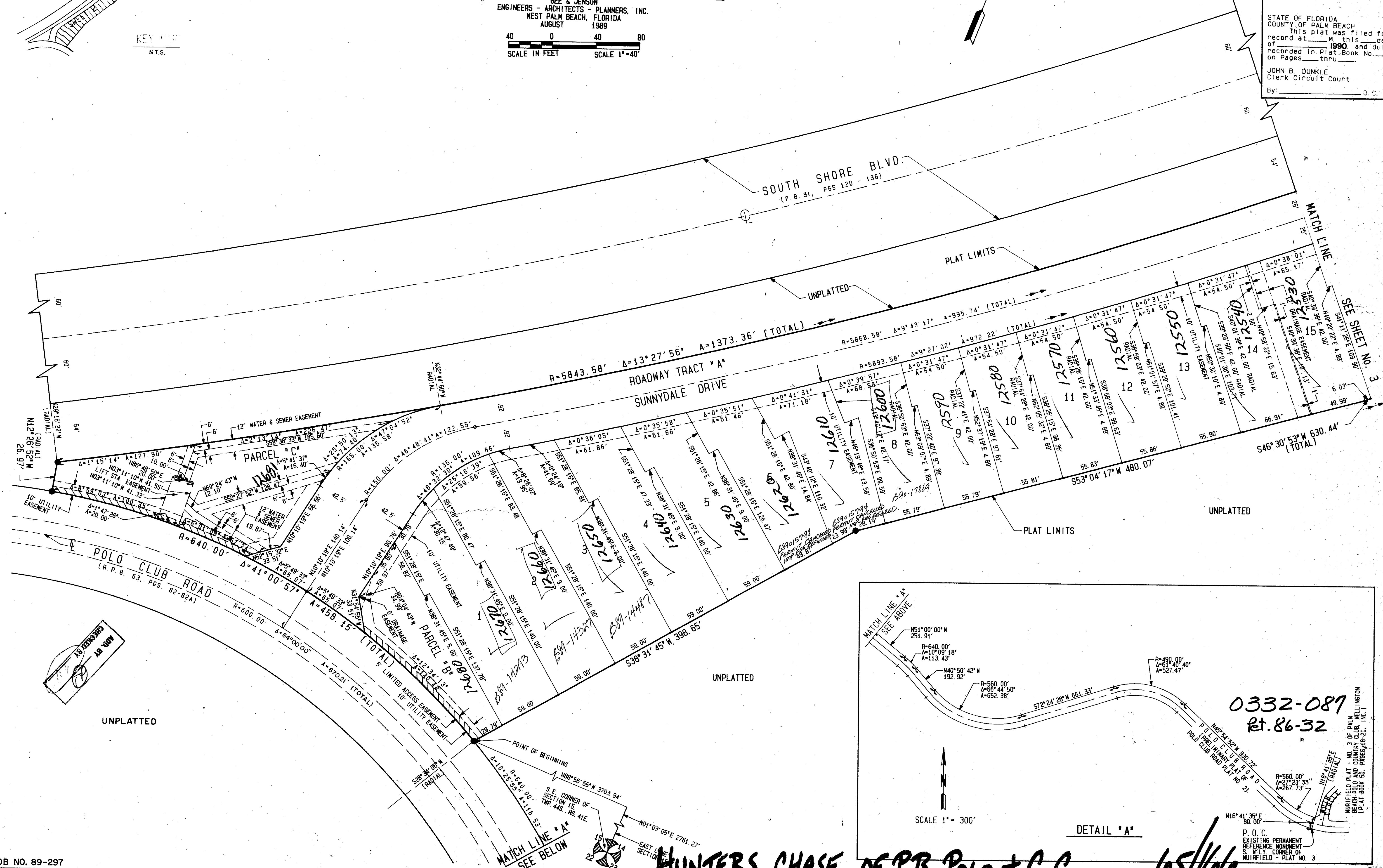
GEE & JENSON
ENGINEERS - ARCHITECTS - PLANNERS, INC.
WEST PALM BEACH, FLORIDA
AUGUST 1989

SCALE IN FEET SCALE 1"=40'



STATE OF FLORIDA
COUNTY OF PALM BEACH
This plat was filed for
record at _____ M. this _____ day
of _____ 1990, and duly
recorded in Plat Book No. _____
on Pages _____ thru _____.

JOHN B. DUNKLE
Clerk Circuit Court
By: _____ D. C.



SUBDIVISION * HUNTERS CHASE OF PALM BEACH
BOOK 65
PAGE 166
FLOOD MAP # 1008
ZONING AR
ZIP CODE 33411
P.O. BOX 86-32
WELLINGTON P.O.D.

COMPUTED D. W. LEI
DRAWN W. R. JONES
CHECKED D.B.
APPROVED [Signature]
REVISION

HUNTERS CHASE OF P.B. POLO & C.C. 05/1/90

0332-087
Pt. 86-32

WELLINGTON P. O. D.
PALM BEACH POLO & COUNTRY CLUB
PLAT NO. 21
EXISTING PERMANENT
REFERENCE MONUMENT
S.W. CORNER OF
MUTFIELD - PLAT NO. 3